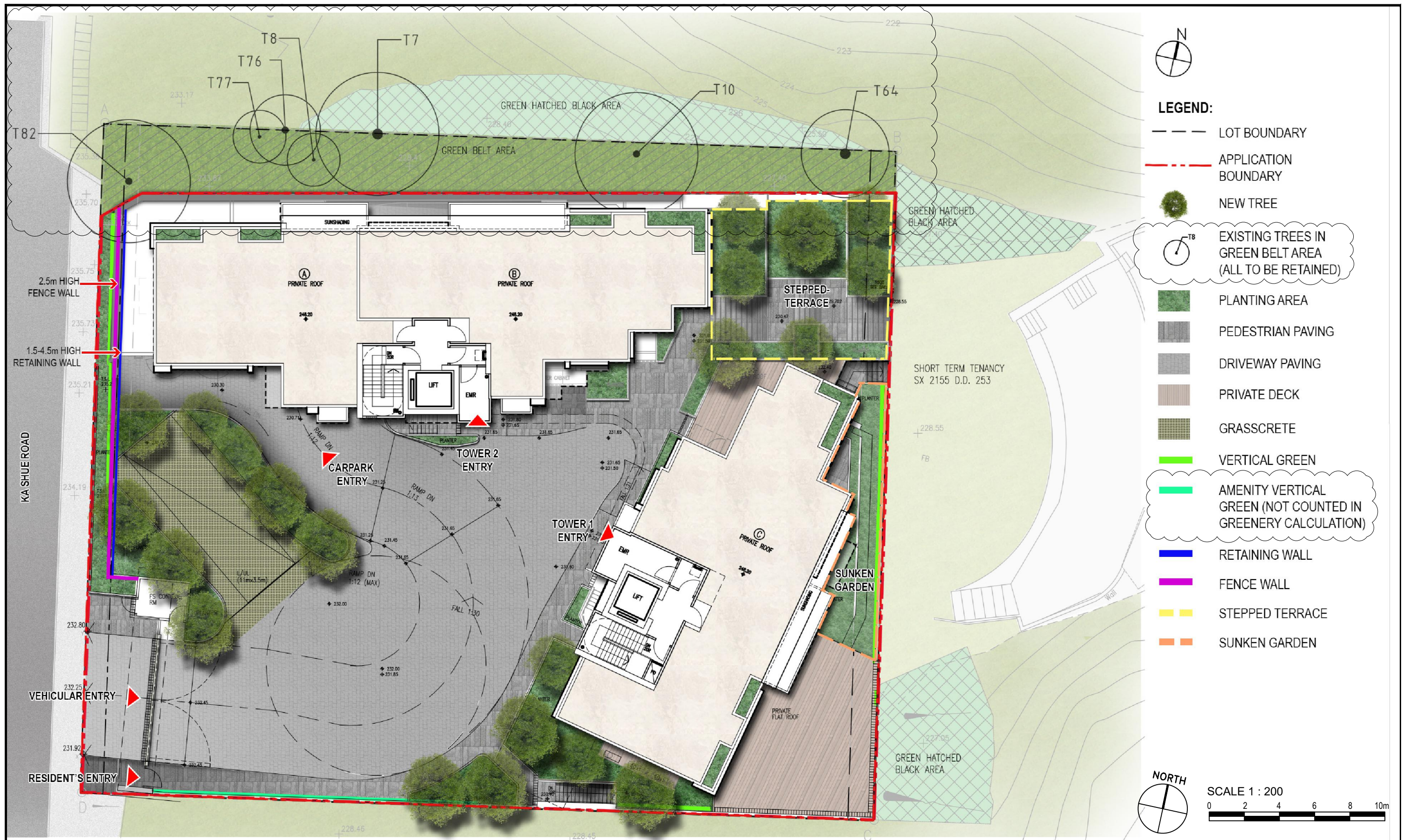


## **Annex D**

---

*Replacement Pages of Landscape Proposal*



**LEGEND:**

- LOT BOUNDARY
- APPLICATION BOUNDARY
- NEW TREE
- EXISTING TREES IN GREEN BELT AREA (ALL TO BE RETAINED)
- PLANTING AREA
- PEDESTRIAN PAVING
- DRIVEWAY PAVING
- PRIVATE DECK
- GRASSCRETE
- VERTICAL GREEN
- AMENITY VERTICAL GREEN (NOT COUNTED IN GREENERY CALCULATION)
- RETAINING WALL
- FENCE WALL
- STEPPED TERRACE
- SUNKEN GARDEN

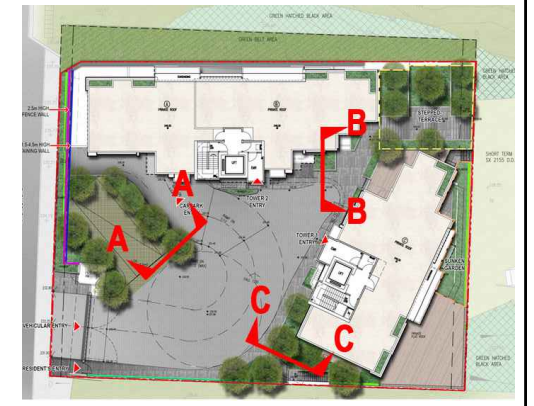


SCALE 1 : 200  
0 2 4 6 8 10m

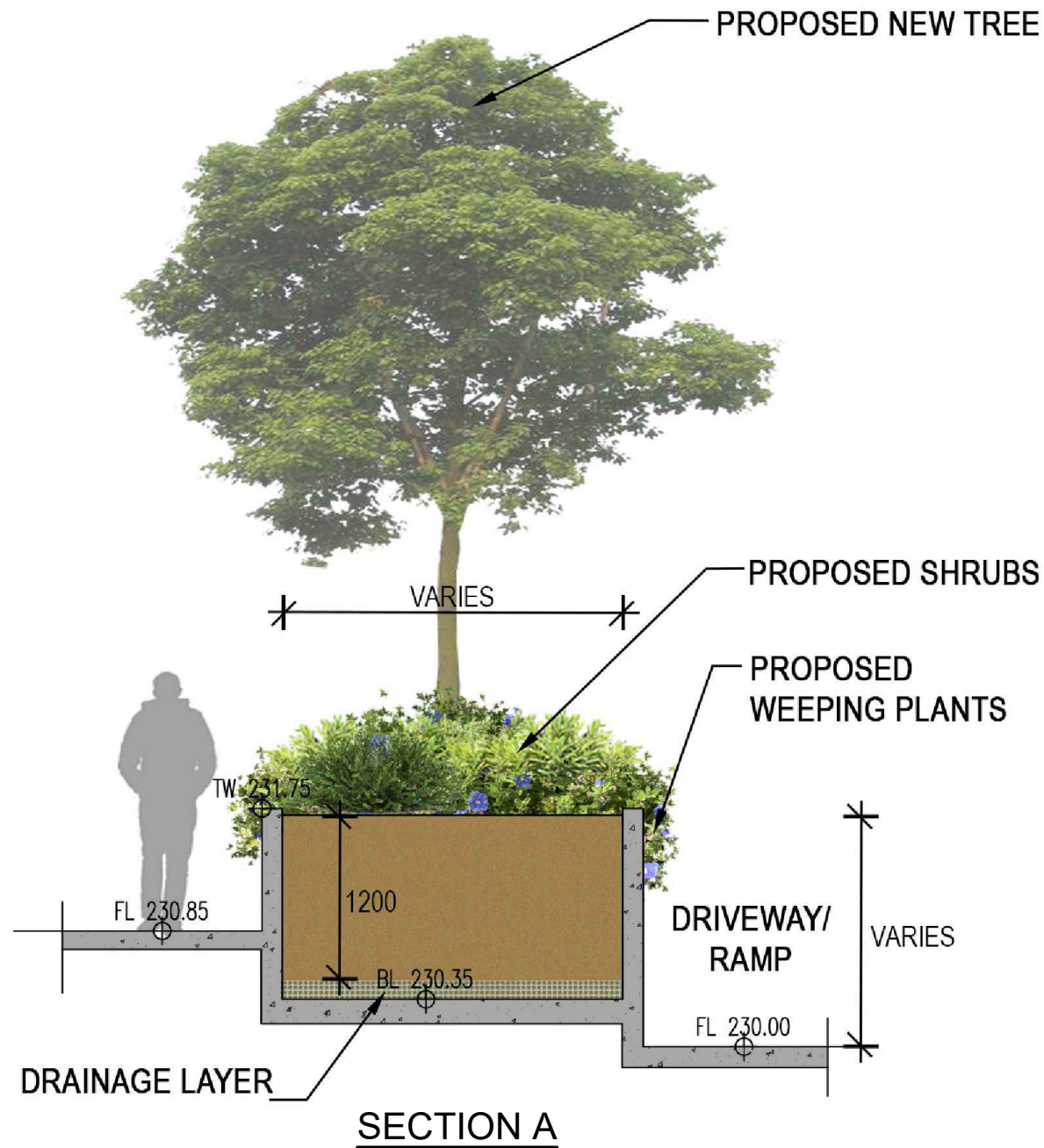
| Amendment No. | Date  | Description      | Drawn by | Checked by | Approved by | Job Title  | Drawing No. | Scale       | Job No.  |
|---------------|-------|------------------|----------|------------|-------------|--|-------------|-------------|----------|
| D             | 01/25 | RtC              | DA       | DC         | TO          | PROPOSED RESIDENTIAL DEVELOPMENT AT LOT 1109 RP IN D.D. 253, 8 KA SHUE ROAD, SAI KUNG, NEW TERRITORIES | SMC1-LMP-01 | 1:200 @ A3  | SMC1     |
| C             | 12/24 | RESUBMISSION     | DA       | DC         | TO          |  |             |             |          |
| B             | 11/24 | RtC              | DA       | DC         | TO          |  |             |             |          |
| A             | 09/24 | RESUBMISSION     | DA       | DC         | TO          |  |             |             |          |
| O             | 07/24 | FIRST SUBMISSION | DA       | DC         | TO          |  |             |             |          |
|               |       |                  |          |            |             | Job Title  | Drawing No. | Scale       | Job No.  |
|               |       |                  |          |            |             | LANDSCAPE MASTERPLAN   | SMC1-LMP-01 | 1:200 @ A3  | SMC1     |
|               |       |                  |          |            |             | Drawn by   | Checked by  | Approved by | Date     |
|               |       |                  |          |            |             | DA   | DC          | TO          | JUN 2024 |



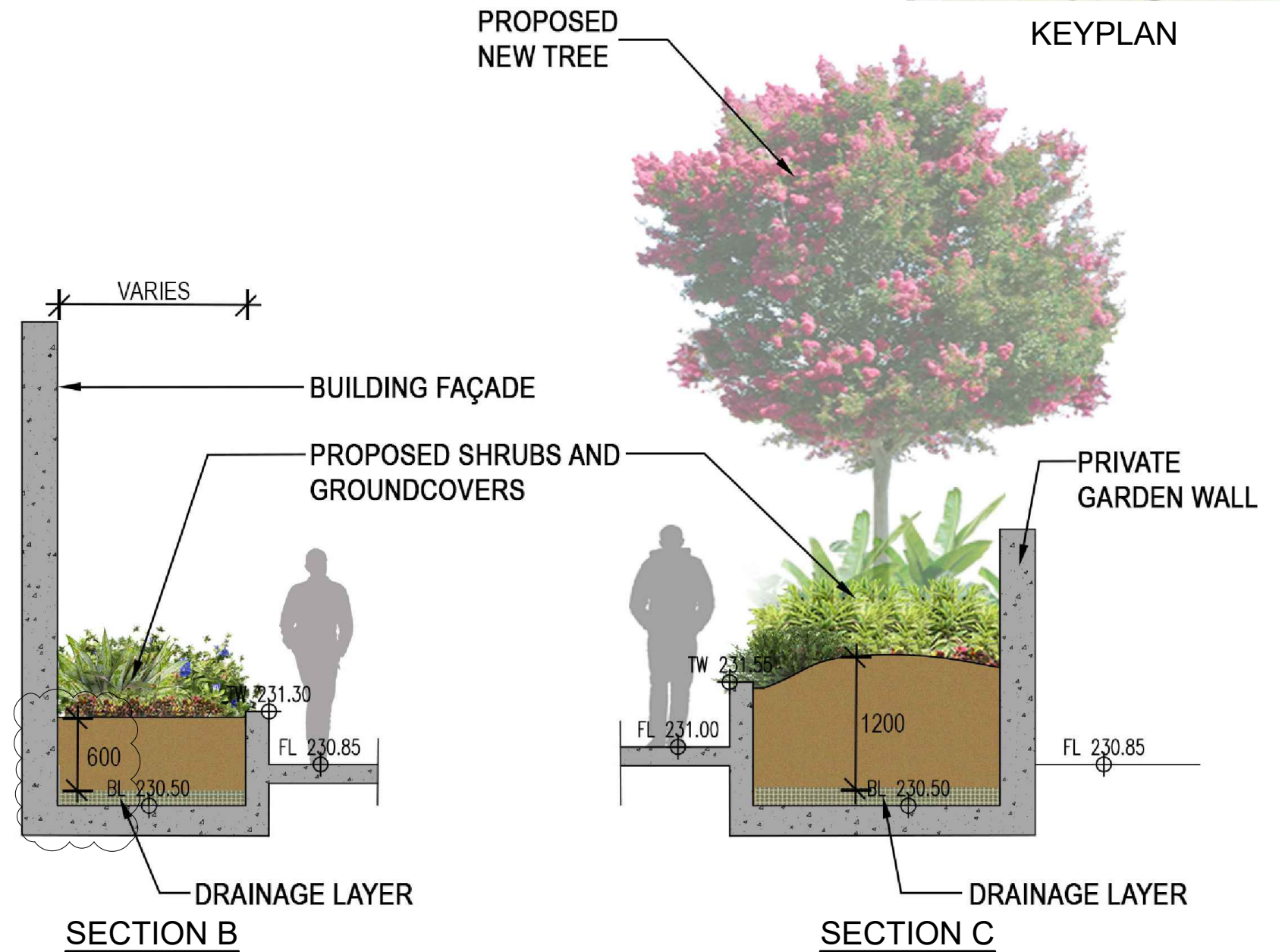
Planning, Urban Design, Landscape, Golf & Environmental Consultants  
Urbis Limited, 11/F Siu On Centre, 188 Lockhart Road, Wan Chai, Hong Kong. Tel : 2802 3333 Fax : 2802 8662



KEYPLAN




SECTION A



SECTION B

SECTION C



|               |       |                  |          |            |             |  |    |            |    |             |                           |      |          |          |      |  |
|---------------|-------|------------------|----------|------------|-------------|--|----|------------|----|-------------|---------------------------|------|----------|----------|------|--|
|               |       |                  |          |            |             | Job Title<br>PROPOSED RESIDENTIAL DEVELOPMENT AT LOT 1109 RP IN<br>D.D. 253, 8 KA SHUE ROAD, SAI KUNG, NEW TERRITORIES |    |            |    |             | Drawing No.<br>SMC1-DE-01 |      |          |          |      |  |
| B             | 01/25 | RESUBMISSION     | DA       | DC         | TO          | Drawing Title<br>TYPICAL PLANTER DETAILS   |    |            |    |             | Scale<br>NTS @A3          |      |          |          |      |  |
| A             | 12/24 | RESUBMISSION     | DA       | DC         | TO          |  |    |            |    |             |                           |      |          |          |      |  |
| 0             | 06/24 | FIRST SUBMISSION | DA       | DC         | TO          |  |    |            |    |             |                           |      |          |          |      |  |
| Amendment No. | Date  | Description      | Drawn by | Checked by | Approved by | Drawn by   | DA | Checked by | DC | Approved by | TO                        | Date | JUN 2024 | Job. No. | SMC1 | <br>Planning, Urban Design, Landscape, Golf & Environmental Consultants<br>Urbis Limited, 11/F Siu On Centre, 188 Lockhart Road, Wan Chai, Hong Kong. Tel : 2802 3333 Fax : 2802 8662 |